

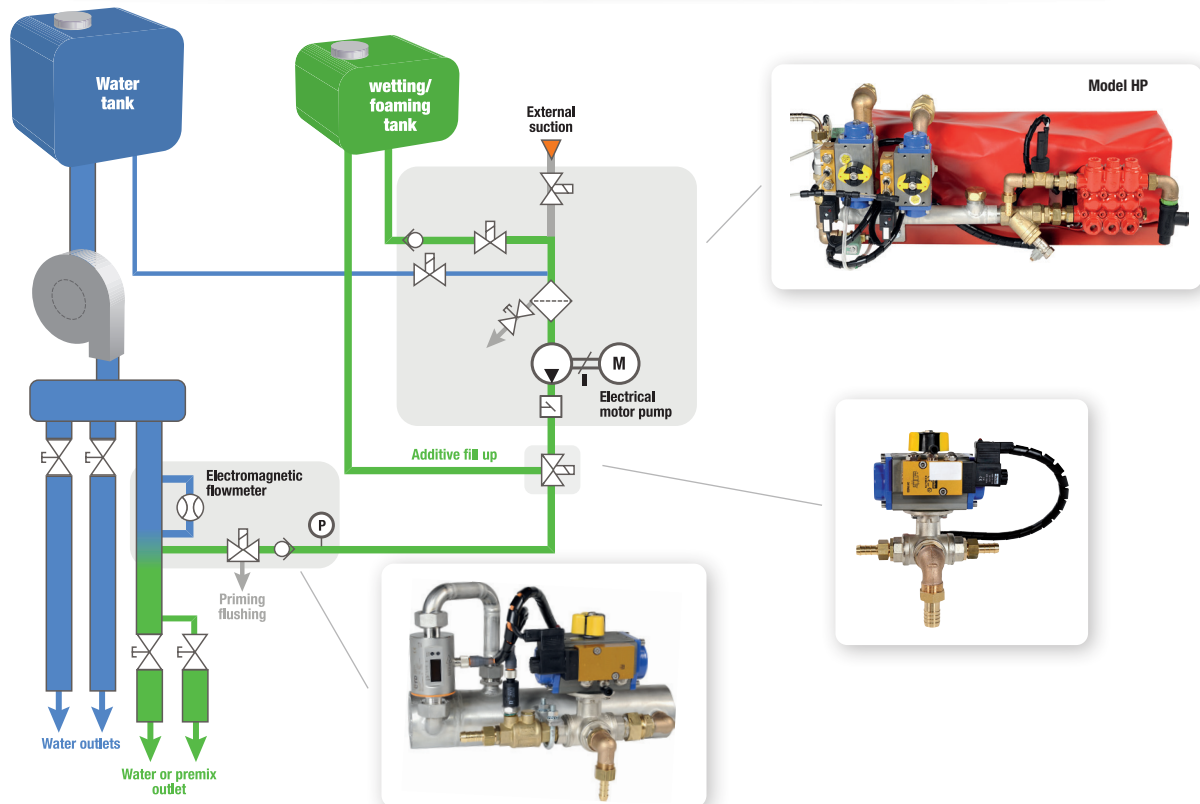
FEATURES

Van
Truck






Water
Pump
< 3000
L/min





Class
A

* by default	BP	HP	HF
Pump flow range	0.2 to 15 lpm	0.2 to 15 lpm	0.4 to 30 lpm
Pump type	Piston		
Suction	-0.15 bar		
Pressure	12 bar	45 bar	12 bar
Dosing range*	0.1 to 1%		
Water flow range*	2 1/2": 50 to 2,000 lpm	1 1/2": 35 to 350 lpm	2 1/2": 50 to 2,000 lpm
Power	elec 24V - 45A	elec 24V - 110A	elec 24V - 60A
Product compatibility	Newtonian		
Flushing	Automated		
Priming	Automated		



POSSIBLE OPTIONS

-  External suction
-  Product tank filling
-  Automatic frost protection
-  Product transfer
-  External suction hose

-  Intervention GPS tracking
-  Tank level sensor
-  Additional screen
-  Double injection LP/HP